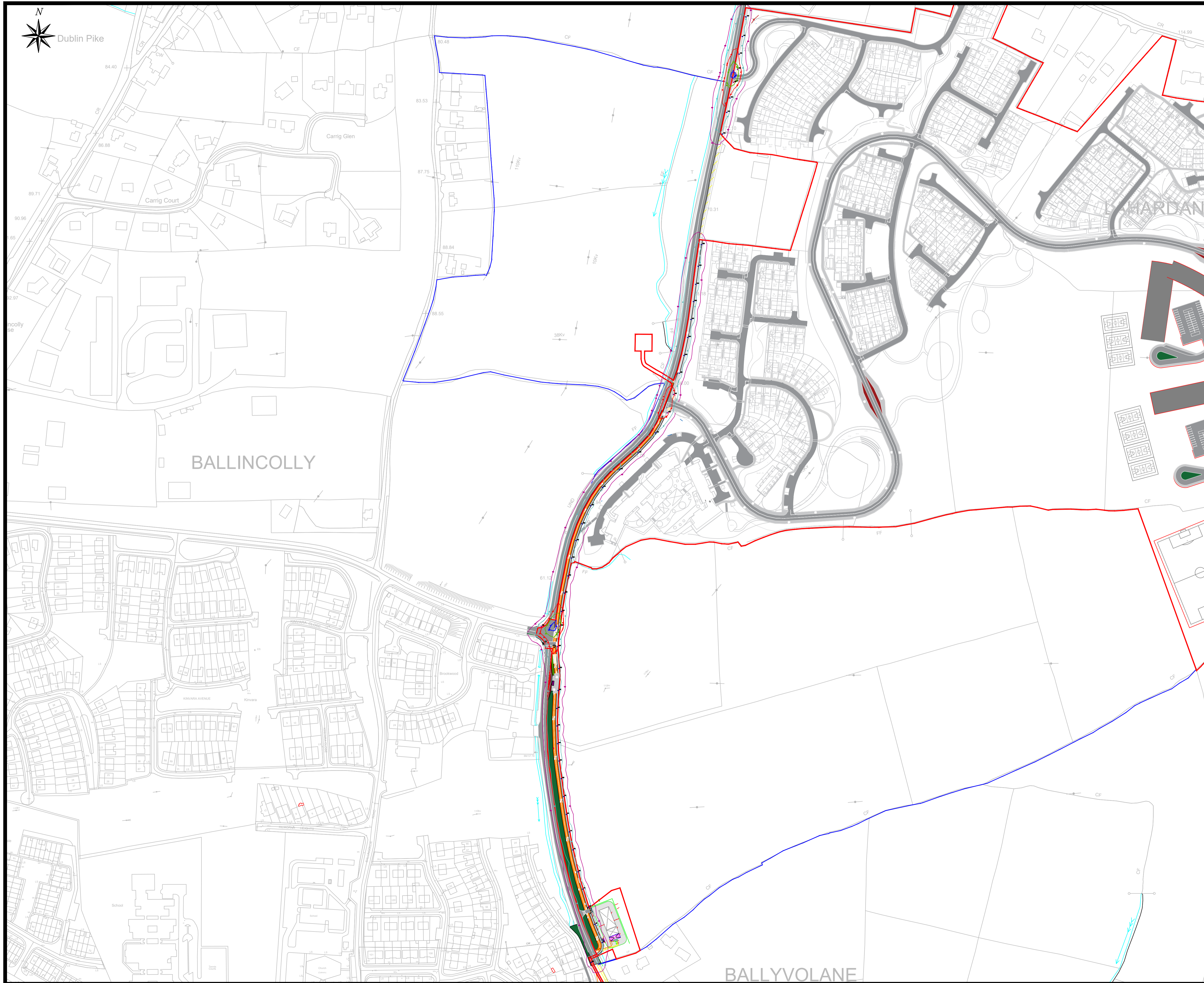




Dublin Pike



NOTES:

All dimensions in metres.
Do not scale from drawing.
For any discrepancies found please consult with design office.
This drawing should be read in conjunction with all contract drawings, documents and specifications.

Legend:

- Philips Luma Micro BGP615 DW50 3.40klm
- Philips Luma Micro BGP615 DW50 1.40klm
- Philips Luma Mini BGP621 DW50 8.00klm
- Philips Luma Micro BGP615 DW50 5.00klm
- Philips Luma Mini BGP621 DW50 12.00klm
- 1.0 Lamp Flux (klm)
- 3.0 Lamp Flux (klm)
- 5.0 Lamp Flux (klm)
- 10.0 Lamp Flux (klm)
- 15.0 Lamp Flux (klm)
- 20.0 Lamp Flux (klm)
- 25.0 Lamp Flux (klm)
- Red-Line Boundary
- Adjoining Land Boundary

Rev By	Date	Description

Drawing Status: Planning
NOT CERTIFIED FOR CONSTRUCTION

Project Title: Longview Estates Development

Drawing Title: Proposed Public Lighting
Ballyhooly Road

Client: Longview Estates Ltd

M.H.L & Associates Ltd.
Consulting Engineers

Carrig Mór House, Tel: 021-4840214
10 High Street, Fax: 021-4840215
Douglas Road, E-Mail: info@mhl.ie
Cork

Designed: FOS	Drawn: SFM	Checked: KM
Scale: 1:2000 @ A1	Date: Nov 2019	
Job No: 17066HD	Drawing No: LHD_PL_P08	Revision: